

**ASX Announcement**  
**14 June 2019**

## SER and Fortescue Farm-In Agreement: Myall Creek Project

- SER and Fortescue execute Farm-In and Joint Venture Agreement over Myall Creek Copper-Gold Project

Strategic Energy Resources (SER) is pleased to announce the execution of a Farm-In and Joint Venture Agreement with FMG Resources Pty Ltd, a subsidiary of Fortescue Metals Group Limited (ASX: FMG; Fortescue) to explore SER's Myall Creek Copper-Gold project in South Australia.

Fortescue will spend \$1.5m on exploration over 5 years, including a minimum of 1500m of drilling at Myall Creek (EL6140 and EL5898) to earn an 80% interest in the project.

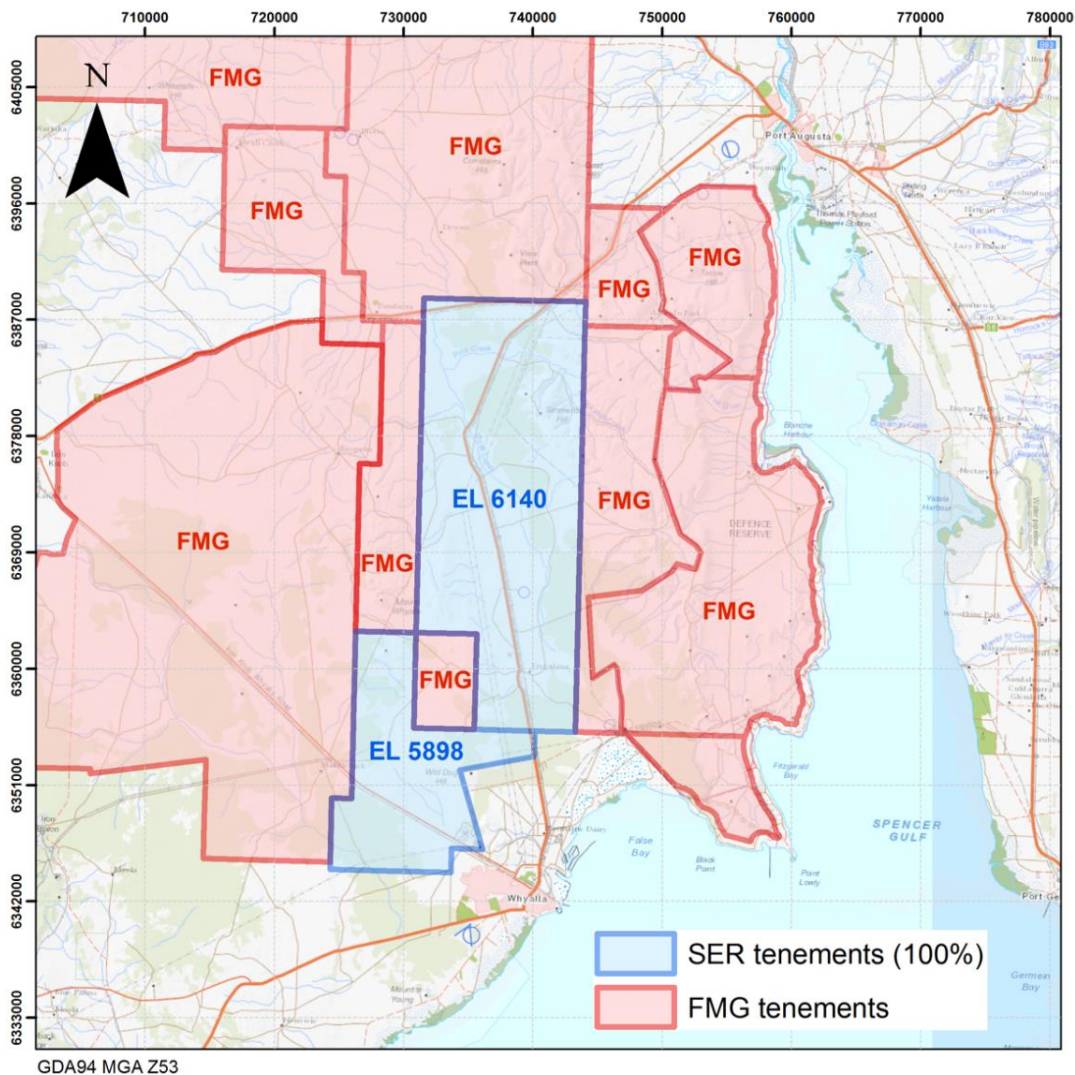
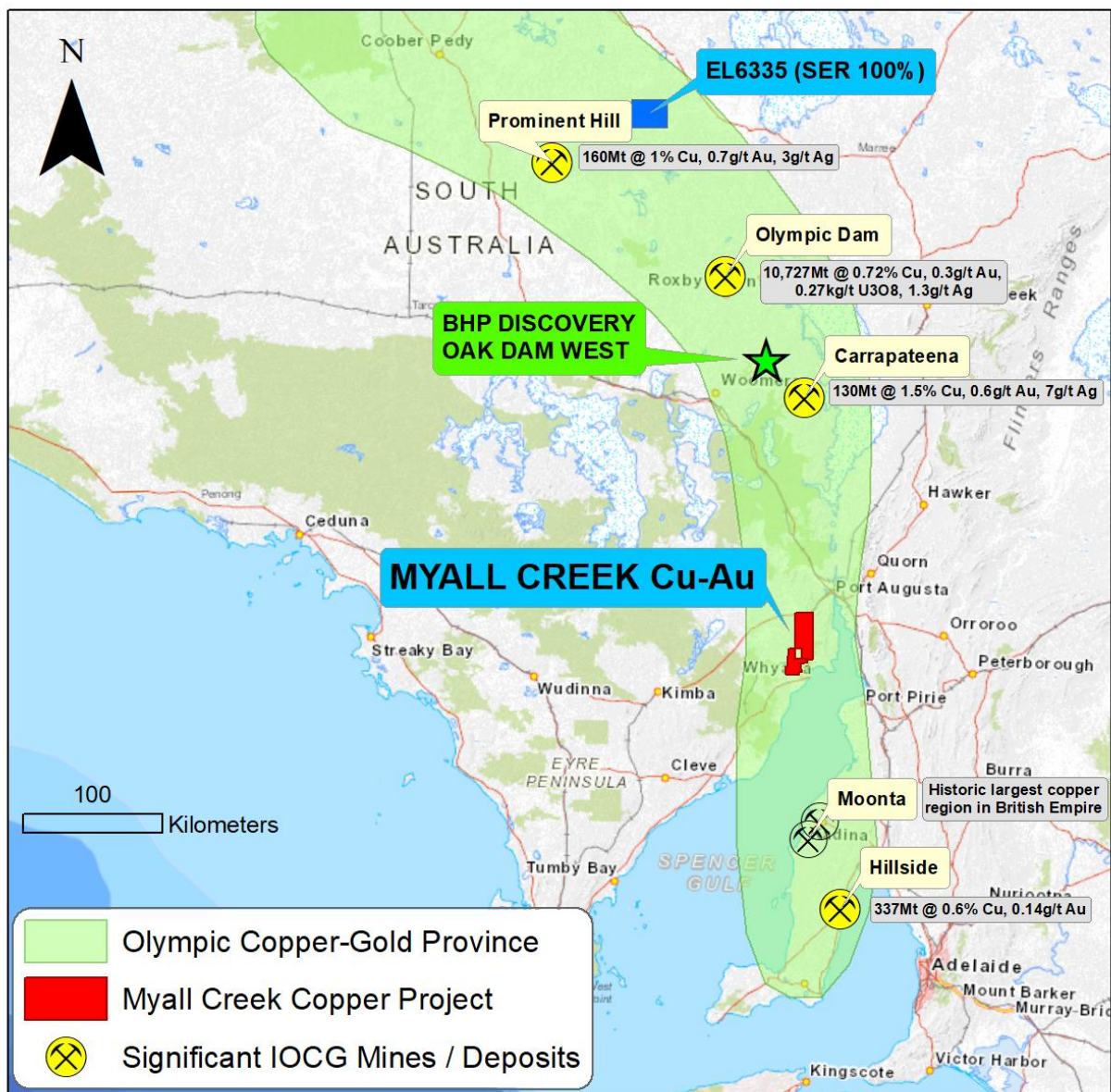


Figure 1: SER's Myall Creek project (blue) and surrounding FMG tenements

For personal use only

Under the agreement Fortescue will manage exploration, satisfy all expenditure requirements and keep the tenements in good standing. After Fortescue have earned-in, a joint venture will be formed under which each party will contribute pro-rata (FMG 80%, SER 20%) to further exploration and development or be diluted in accordance with industry standard formula.

At Myall Creek, SER and Fortescue are targeting Iron Oxide Copper-Gold (IOCG) mineralisation in the Proterozoic basement and sediment-hosted mineralisation in the overlying sediments. Key IOCG host rocks are present within the project area and overlying sediments include a 15km zone with anomalous copper in historic drilling.



Sources: BHP Annual Report 2018; OZL Annual Report 2017; RXM Web Site

Figure 2: Location of Myall Creek within Olympic Cu-Au Province

For personal use only

The Myall Creek tenements lie within the Cultana Training Area controlled by the Department of Defence. SER has built a solid relationship with Defence over many years and has already been granted access to explore within the training area.

**SER Executive Chairman, Stuart Rechner said:** “SER welcomes Fortescue joining the Myall Creek Copper-Gold Project, bringing its substantial exploration and technical capability having discovered and developed some of the most significant mines in the world.

**For further information,** please contact +61 3 9692 7222 or visit website [www.strategicenergy.com.au](http://www.strategicenergy.com.au)

*The information in this document that relates to Exploration Results is based on information compiled by Mr Stuart Rechner BSc (Geology) MAIG, a Competent Person who is a Member of Australian Institute of Geoscientists. Mr Rechner is a Director of, and consultant to, Strategic Energy Resources Ltd. Mr Rechner has sufficient experience that is relevant to the style of mineralisation and type of deposit under consideration and to the activity being undertaken to qualify as a Competent Person as defined in the 2012 Edition of the 'Australasian Code for Reporting of Exploration Results, Mineral Resources and Ore Reserves'. Mr Rechner consents to the inclusion in the document of the matters based on his information in the form and context in which it appears.*